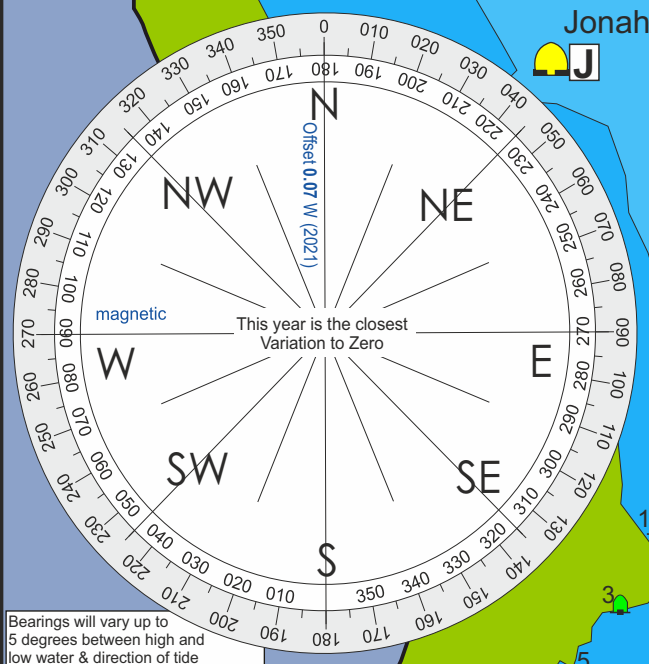


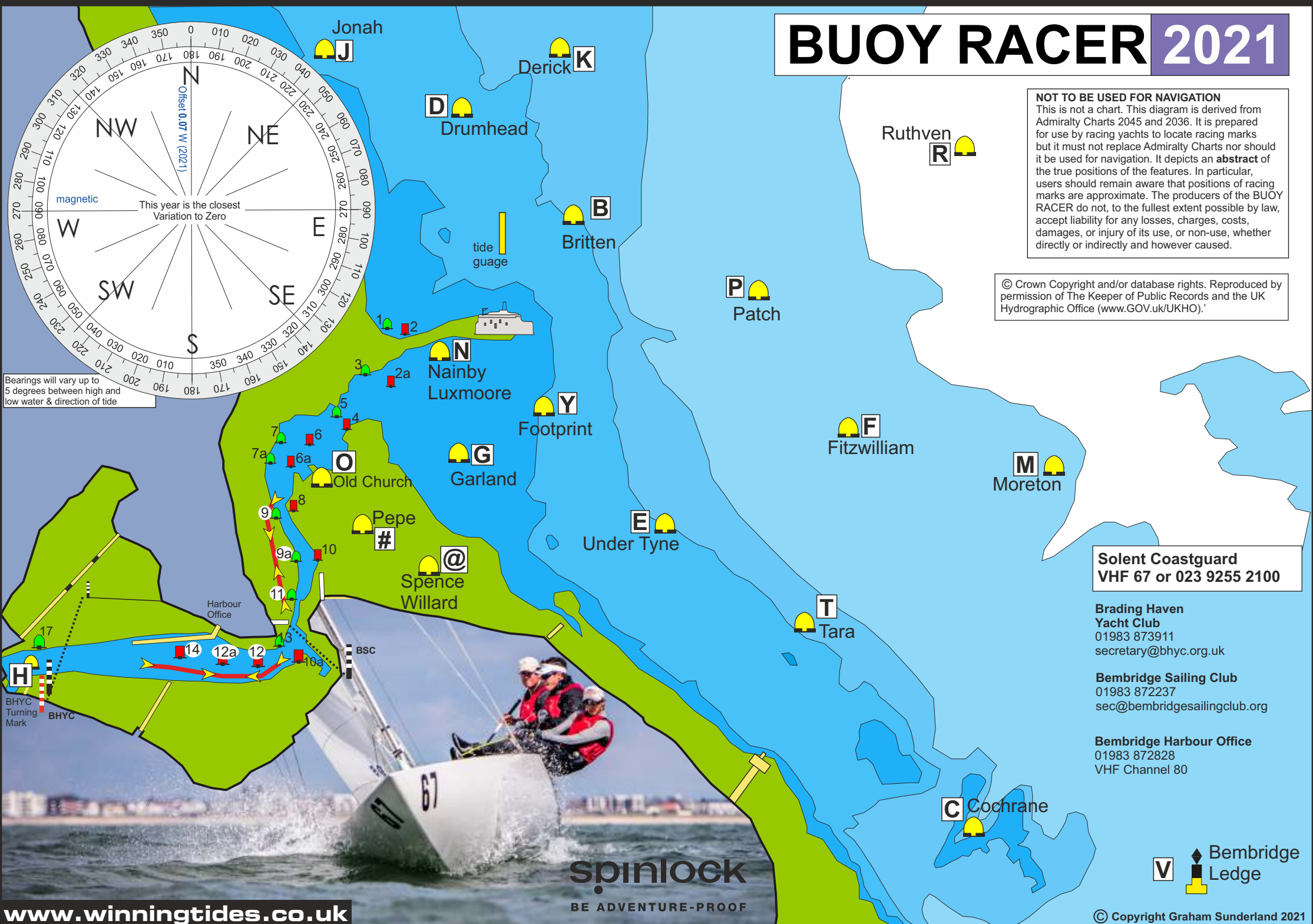
BUOY RACER 2021

NOT TO BE USED FOR NAVIGATION
 This is not a chart. This diagram is derived from Admiralty Charts 2045 and 2036. It is prepared for use by racing yachts to locate racing marks but it must not replace Admiralty Charts nor should it be used for navigation. It depicts an **abstract** of the true positions of the features. In particular, users should remain aware that positions of racing marks are approximate. The producers of the BUOY RACER do not, to the fullest extent possible by law, accept liability for any losses, charges, costs, damages, or injury of its use, or non-use, whether directly or indirectly and however caused.

© Crown Copyright and/or database rights. Reproduced by permission of The Keeper of Public Records and the UK Hydrographic Office (www.GOV.uk/UKHO).'



Bearings will vary up to 5 degrees between high and low water & direction of tide



Solent Coastguard
 VHF 67 or 023 9255 2100

Brading Haven Yacht Club
 01983 873911
 secretary@bhyc.org.uk

Bembridge Sailing Club
 01983 872237
 sec@bembridgesailingclub.org

Bembridge Harbour Office
 01983 872828
 VHF Channel 80

V Bembridge Ledge