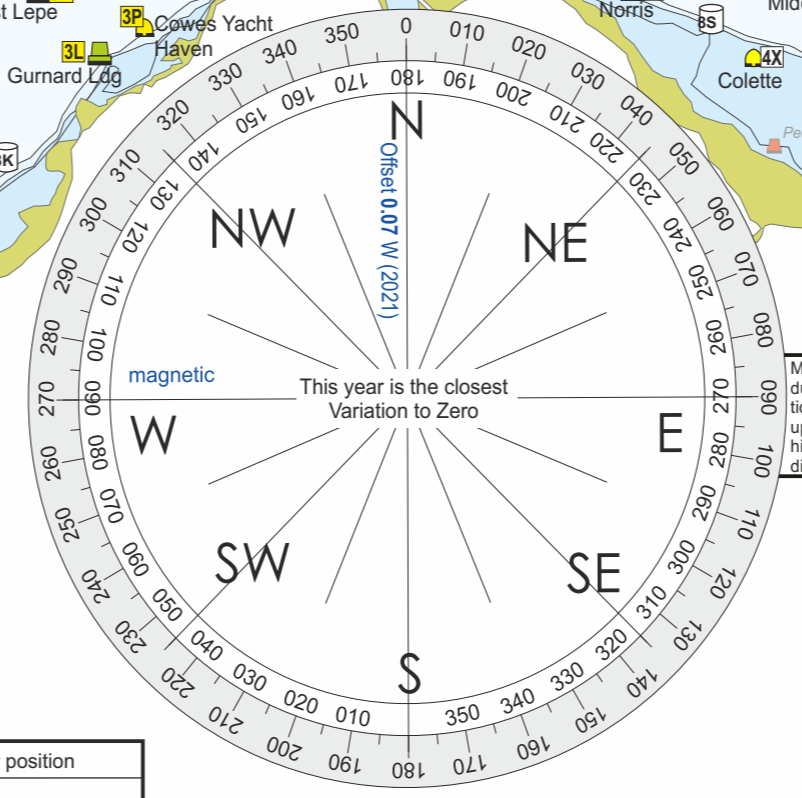
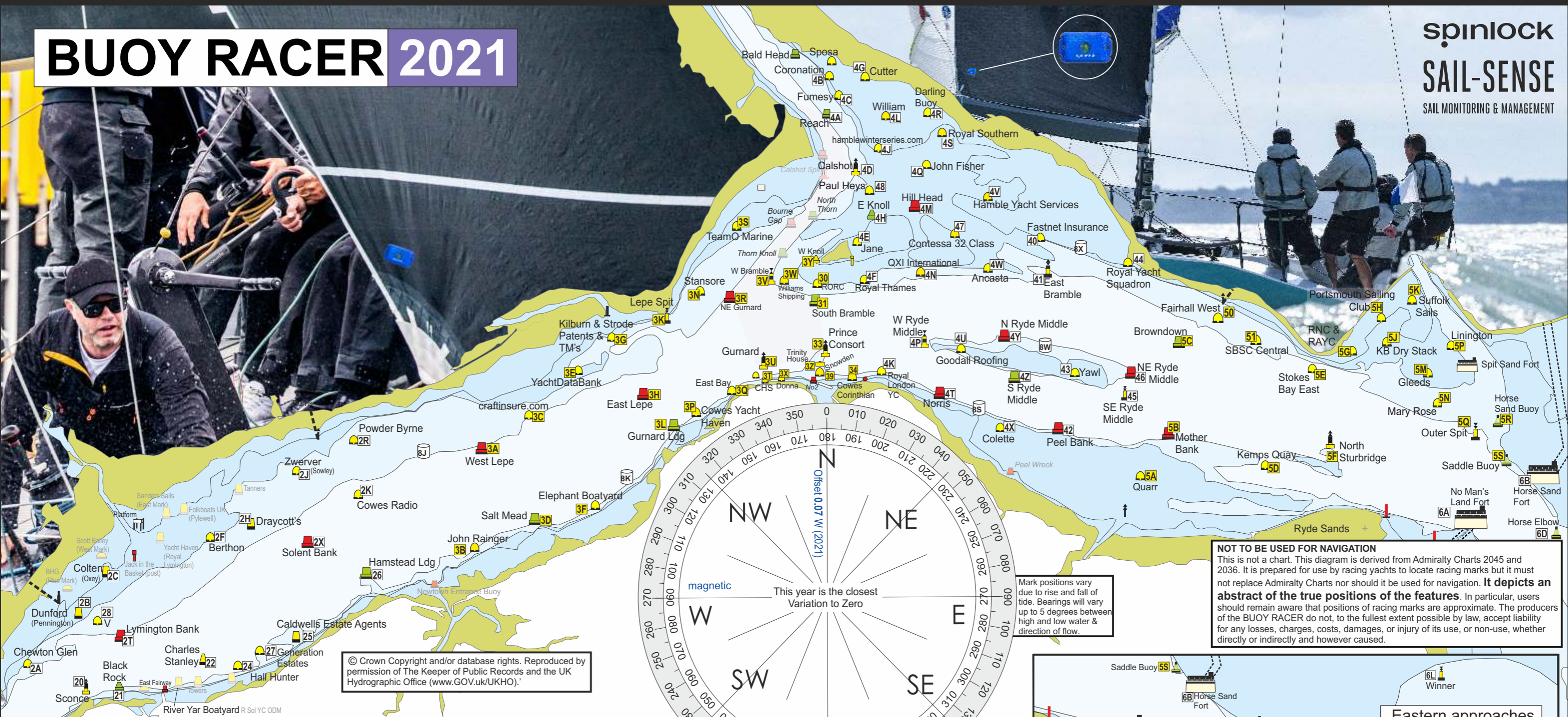


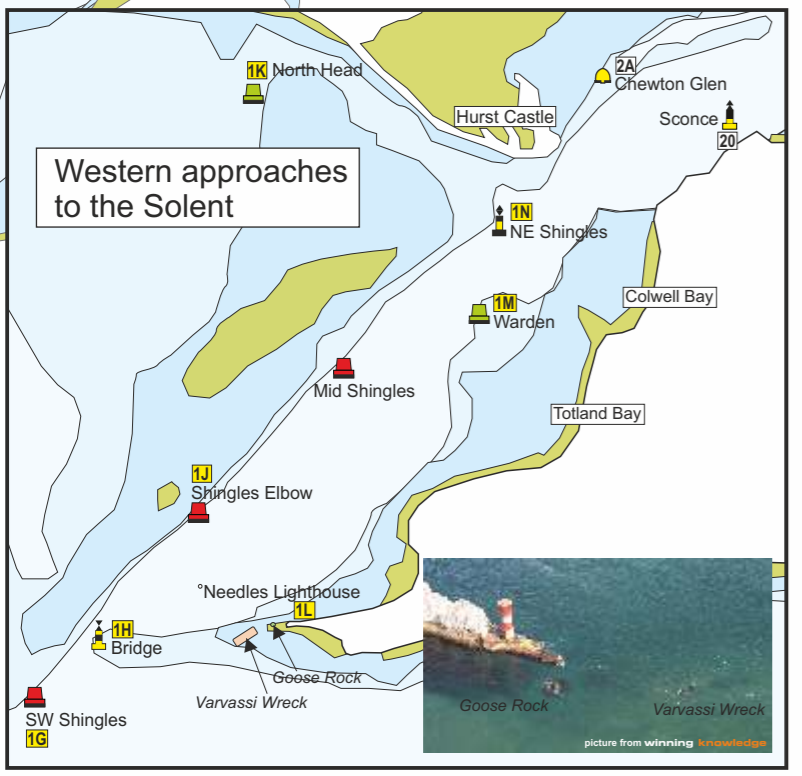
# BUOY RACER 2021

spinlock  
SAIL-SENSE  
SAIL MONITORING & MANAGEMENT



Mark positions vary due to rise and fall of tide. Bearings will vary up to 5 degrees between high and low water & direction of flow.

**NOT TO BE USED FOR NAVIGATION**  
This is not a chart. This diagram is derived from Admiralty Charts 2045 and 2036. It is prepared for use by racing yachts to locate racing marks but it must not replace Admiralty Charts nor should it be used for navigation. **It depicts an abstract of the true positions of the features.** In particular, users should remain aware that positions of racing marks are approximate. The producers of the BUOY RACER do not, to the fullest extent possible by law, accept liability for any losses, charges, costs, damages, or injury of its use, or non-use, whether directly or indirectly and however caused.



Designation	P or S	Mark name or position

- |  |   |   |
|--|---|---|
| P Preparatory signal   | General recall. Warning signal 1 minute after removal         | C position of the next mark has changed                                 |
| I Flag round the ends if over 1 min before the start   | M The object displaying this signal replaces a missing mark   | F often hoisted to show a start is imminent see S's                     |
| Z Flag 20% place penalty if over 1 min before the start Also carries forward to a restarted race | L Ashore: A notice to competitors has been posted             | S The course has been shortened.  |
| Black flag disqualified if over 1 min before the start   | This race committee boat is in position at the finishing line | Y Wear personal buoyancy  |
| X Individual recall.   |   | U Flag disqualified if OCS in 1 min before start does not carry forward |

